

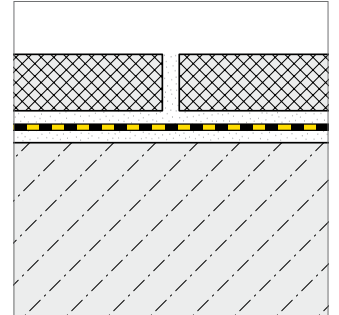
Since the usage and finishing of the product is not under our control, we accept no liability for the success of the work and can therefore only guarantee the nature of our products as per the accompanying product data sheets and in accordance with our general terms and conditions of sale. The properties listed here represent no guarantee with respect to the eventual use of our products. We reserve the right to make changes due to technical advances. Any other technical information given in the course of a consultation must be confirmed in writing. Colours shown here are restricted by the printing techniques and may differ from those exhibited by the products themselves. We also reserve the right to make alterations to the product technology or design. Only the current version of this data sheet is valid. Such versions are accessible by anyone via the internet. The issue of the latest data sheet invalidates all those that have been published beforehand.

DURABASE WP

1/2

Composite waterproofing mat for walls and floors in internal areas

- Product information -



THE PROBLEMS:

1. Tanking walls and floors

A tiled floor is not inherently waterproof. In particular, where there are junctions around fittings and at wall connections, water can seep under the tiles and damage the subfloor or the room below. Walls and floors may have to cope with extremely damp conditions, particularly in bathrooms, but also in certain commercial operations such as breweries.

2. Cracks

In some renovating projects, cracks can be found in the subfloor, meaning it's impossible to install a safely watertight new tiled surface.

PRODUCT PROPERTIES:

■ Tanking walls and floors

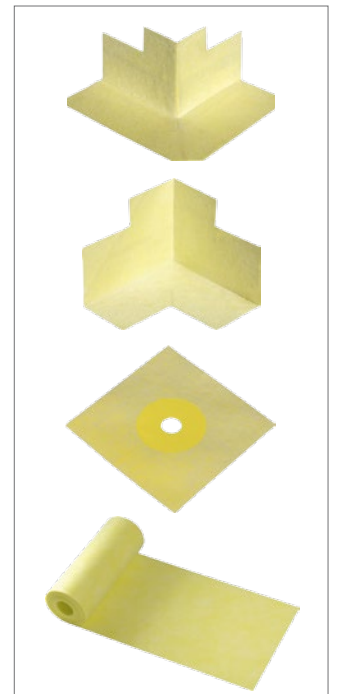
In internal areas, DURABASE WP can be used as a waterproof seal in combination with the tiled surface on walls and floors. Here, DURABASE WP offers secure bonding to the subsurface and easy installation.

■ Sealing in areas with extremely high moisture levels

Even in areas where moisture levels are more likely to be extremely high, DURABASE WP can still be used in conjunction with a tiled floor for sealing walls and flooring.

■ Installing floor coverings that are resistant to chemicals

When used in conjunction with epoxy resin adhesive and grout as well as suitable tiles, DURABASE WP can even be used to produce a floor that is resistant to chemicals in accordance with stress classification „C“, as stipulated for the food industry, for example.



DURAL GmbH

Südring 11

D-56412 Ruppach-Goldhausen

Tel. +49 (0) 2602/9261-0

Fax +49 (0) 2602/9261-50

info@dural.com

Composite waterproofing mat for walls and floors in internal areas

- Product information -

GENERAL CONSTRUCTION INDUSTRY TEST CERTIFICATE:

DURABASE WP has been tested as a sealing material for use in conjunction with tiled and slab flooring for the waterproofing of buildings against non-pressing water under high stress, e.g. wet rooms in public and private buildings. Information on the system components used for waterproofing is available on request.

INSTALLATION INSTRUCTIONS (quick guide):

1. The subfloor must be dry and free of any materials that would impair adhesion. It must be level and able to bear weight. Any repairs must be carried out prior to the installation of DURABASE WP.
2. Use a serrated trowel 4 x 4 mm to apply thin bed of adhesive to the professionally prepared subsurface. With most substructures, a hydraulically-binding flexible adhesive or rapid setting flexible adhesive in accordance with DIN EN 12004 / C2 can be used.
3. Seal transitional areas between the wall and floor with WP sealing tape. Seal pipe connections using the customised DURABASE FLEX prefabricated moulded parts.
4. Embed the entire surface of the blank side of the cut-to-size matting into the adhesive. Then apply pressure working from the centre outwards in order to force out any air pockets. Overlap the mat joints by around 5-8 cm. Make sure that the overlap bonding is waterproof.
5. Then the tiles can be laid directly onto the matting using the thin-bed procedure, it's not necessary to wait for adhesive to dry before laying the tiles.

N.B.:

Please refer to our detailed installation instructions online at www.dural.com.

The generally recognised rules of good engineering practice must always be observed!

The following applies to all products/materials: suitability with respect to mechanical and chemical stresses must be checked carefully prior to installation of the mats.

Protect the material from long periods of exposure to sunlight.

PRODUCT DATA:

MATERIAL:	Polypropylene / Polyethylene
MATT HEIGHT:	approx. 0.5 mm
ROLL WIDTH:	100 cm
ROLL LENGTH:	5 / 10 / 25m
COLOUR:	Yellow
SPECIAL PRODUCT PROPERTIES:	Stress classifications: A, C
TEST CERTIFICATES:	abP Verbundabdichtung CSTB Spec CSTB échançéité
STORAGE:	Store in a dry place, away from sunlight



DURAL GmbH

Südring 11

D-56412 Ruppach-Goldhausen

Tel. +49 (0) 2602/9261-0

Fax +49 (0) 2602/9261-50

info@dural.com